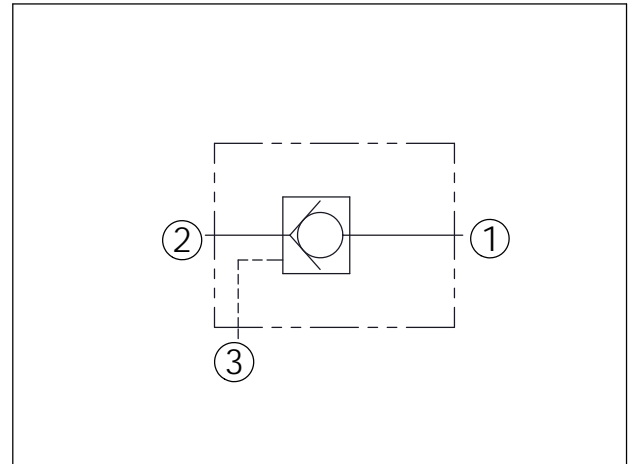
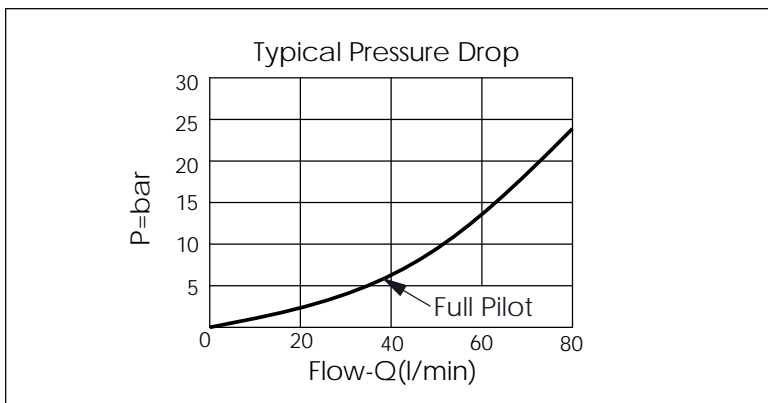


Ordering Code: **CO-11A-X-Y-Z**

UNIT:mm



TECHNICAL DATA		
Max. Operating pressure:	350 bar	
Rated flow:	60	l/min
Cavity-Tooling:	11A-3	
Installation torque:	40-50	Nm
Weight:	0.13 (Z=N, NP)	kg
	0.16 (Z=L)	kg



X	OPERATION	
30	2 to 1 (Free Flow)	Pilot Ratio 3:1
3C	2 to 1 (Free Flow)	Sealed Pilot Piston Pilot Ratio 3:1
3D	2 to 1 (Free Flow)	Sealed Pilot Piston Pilot Ratio 4.2:1

Y	SPRINGS	
	Cracking pressure	
01	0.1 bar	
03	0.3 bar	
10	1.0 bar	
20	2.0 bar	
35	3.5 bar	
50	5.0 bar	
70	7.0 bar	

Z	OPTION	
N	Non-adjustable	
NP	Non-adjustable With stainless steel external metal components (Buna-N Seal)	
L	Leakproof hex. socket screw.	

RELIEF VALVE (Pilot Operated Balanced Piston)

Ordering Code: **RP-10A-X-Y-Z**

Control Option:
Maximum extension
from locating shoulder.
(Z=L Control shown)

14.27 Hex. (9/16 inch)
Torque 9-10 Nm
Apply CH (5JAA097)
Plastic tamper
resistant cover

4.0 Hex.

Z=G Control

12.7 Hex. (1/2 inch)

14.27 Hex. (9/16 inch)
Torque 4-5 Nm

22.22 Hex.
(7/8 inch)

M20x1.5

Outlet ②

Inlet ①

38.5

5.5

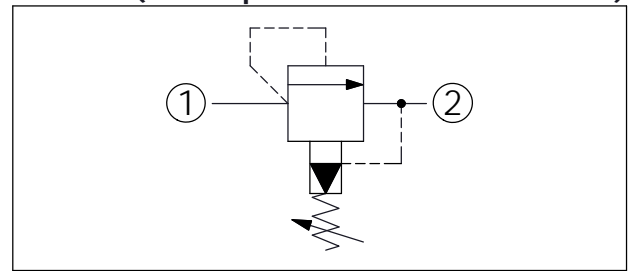
40

Locating
Shoulder

L=51
K=57

Ø19

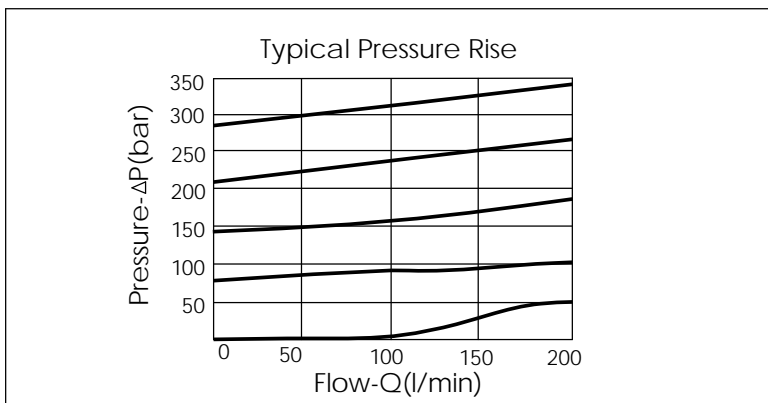
UNIT:mm



TECHNICAL DATA		
Max. Operating pressure:	350 bar	
Rated flow:	95	l/min
Cavity-Tooling:	10A-2	
Installation torque:	40-50	Nm
Weight:	0.14 (Z=L,LP) 0.12 (Z=G) 0.15 (Z=LF) 0.13 (Z=G1) 0.42 (Z=KF)	kg
Will accept maximum pressure at port 2; suitable for use in cross port relief circuits. If used in cross port relief circuits, consider spool leakage.		

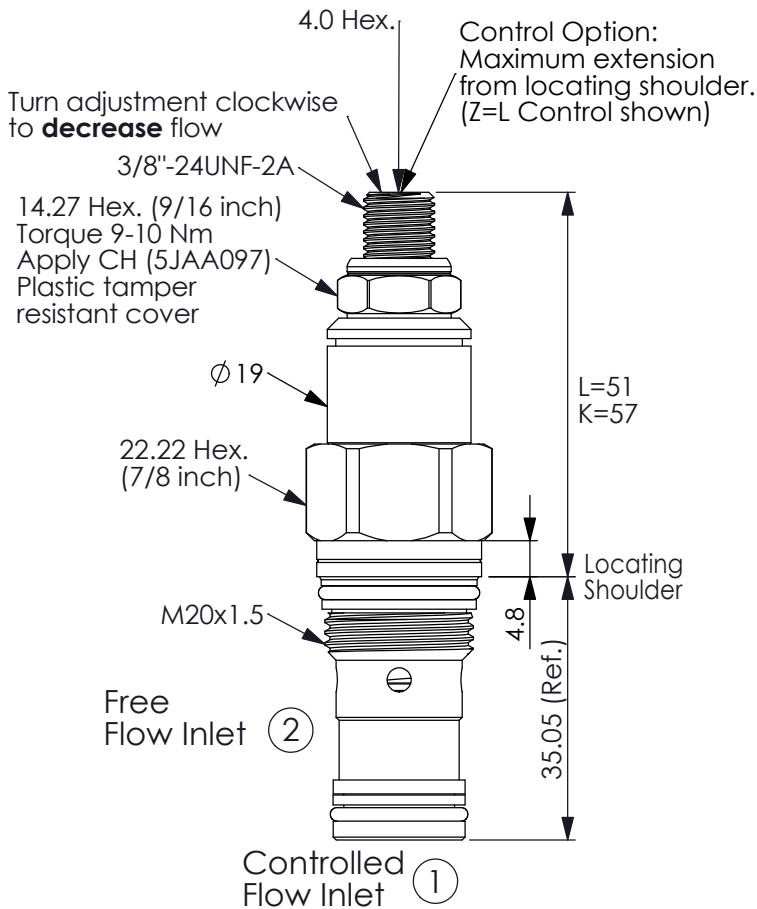
X	OPERATION	
20	1 to 2 (P to T)	
<ul style="list-style-type: none"> Response Time-Typical (10 ms) Maximum Leakage (33 cc/min./70 bar) 		

Z	OPTIONS (Please refer to detailed instruction)	
L	Leakproof hex. socket screw.	
LP	Leakproof hex. socket screw. With stainless steel external metal components	
LF	Leakproof hex. socket screw with Panel Mount.	
K	Handknob with Lock Knob.	
KF	Handknob with Panel Mount.	
C	Stainless Steel Tamper Resistant Cover.	
G	Wrench Adjustment	
GA	Socket Head Set Screw with Cap	

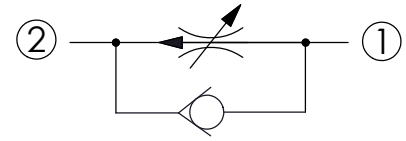
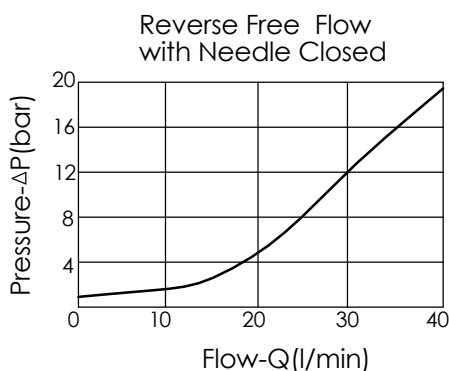
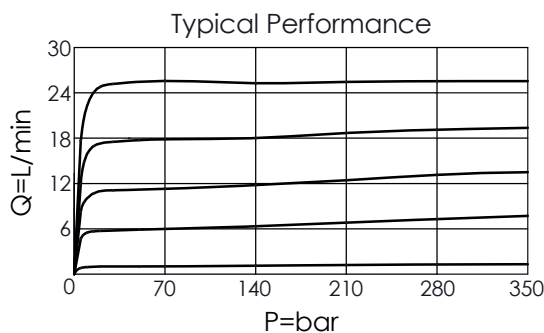


Y	SPRINGS	
	ADJUSTMENT RANGES	
A	7-210 bar (70 bar Standard Setting)	
B	3.5-105 bar (70 bar Standard Setting)	
C	10.5-420 bar (70 bar Standard Setting)	
D	1.7-55 bar (28 bar Standard Setting)	
E	1.7-28 bar (14 bar Standard Setting)	
N	4-55 bar (28 bar Standard Setting)	
Q	4-28 bar (14 bar Standard Setting)	
W	10.5-315 bar (70 bar Standard Setting)	

Ordering Code: **FR-13A-X-Y-Z**



UNIT:mm



TECHNICAL DATA

Max. Operating pressure: 350 bar

Rated flow: 23 l/min

Cavity-Tooling: 13A-2

Installation torque: 40-50 Nm

Weight: 0.14 kg

Accurate pressure compensated control requires that a 200 psi (14 bar) minimum pressure differential be maintained across the valve.

X OPERATION

20 Standard Type

Y FLOW SETTING

A 0.4-23 LPM

B 0.4-8 LPM

C 0.4-4 LPM

Z OPTIONS

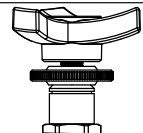
L Leakproof hex. socket screw.



LP Leakproof hex. socket screw. With Stainless Steel External Components



T Three-winged Handknob Kit.



K Handknob with Lock Knob.
(Order Code: 6ZAK001)

